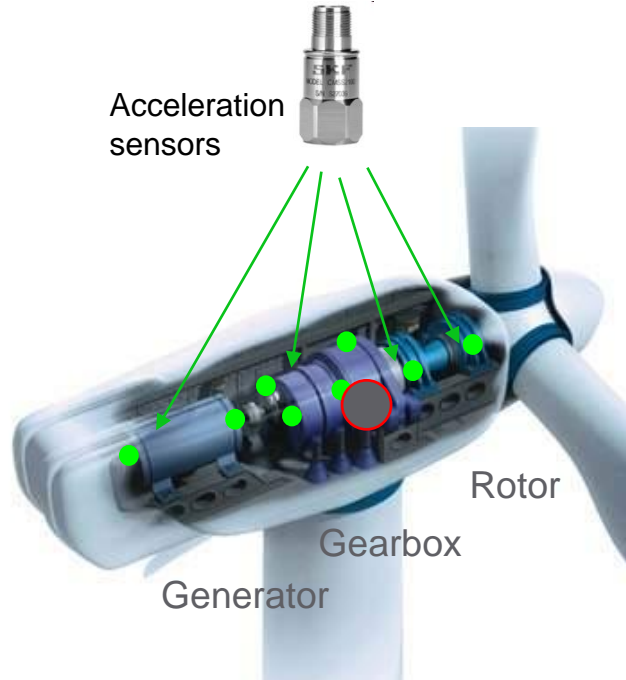


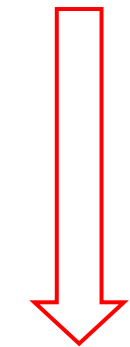
Statistical approach to improve prediction capability of CMS

Fabrice Drommi, Business Development Manager Wind, Windergy, April 2017

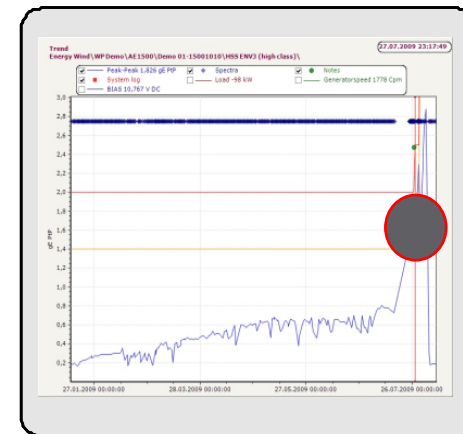
Diagnostic workflow on wind turbines



Monitoring unit (SKF IMx)



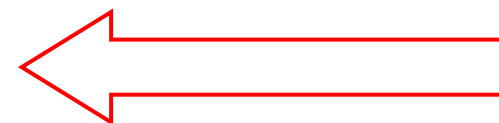
Automatic alarms



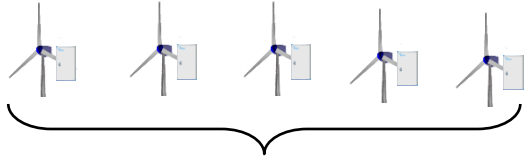
SKF RDC Remote Diagnostic Centre

Event Report			
Customer: SKF Maintenance Services GmbH Mr. Alberts Tel.: +49 40 3290876-43 Fax: +49 40 3290876-90 Mr. Wilka Tel.: +49 40 3290876-42 Fax: +49 40 3290876-90			
Event No : 63056/2009/01 Windpark : Wind Turbine: Nordic N1000 Generator: Manufacturer Weier, Typ DASGH 450 WL			
Component	Diagnosis	Classification	Recommendation
Generator	Increasing of the overall value in the average signal (see Fig. 1) Analysis of the acquired data indicates evidence of an early bearing defect at the generator DE bearing 6224 (see Fig. 2).	7	An immediate bearing replacement is not necessary. But to avoid consequential damages, a bearing change should be planned within the next month.
The classification is specified as following: ■ normal abrasion or wear – no action required ■ visible defect indicators – no change necessary; maybe other sanctions will be proposed by SKF. ■ serious defects; an immediate replacement is necessary to prevent consequential damages.			
Hamburg, 18.08.2009 (Print, Send)		Michael Wilka (Signature)	Christian Alberts (Signature)

- Data analysis
- Condition investigation
- Recommendation



Fleet analysis → Decision guidance



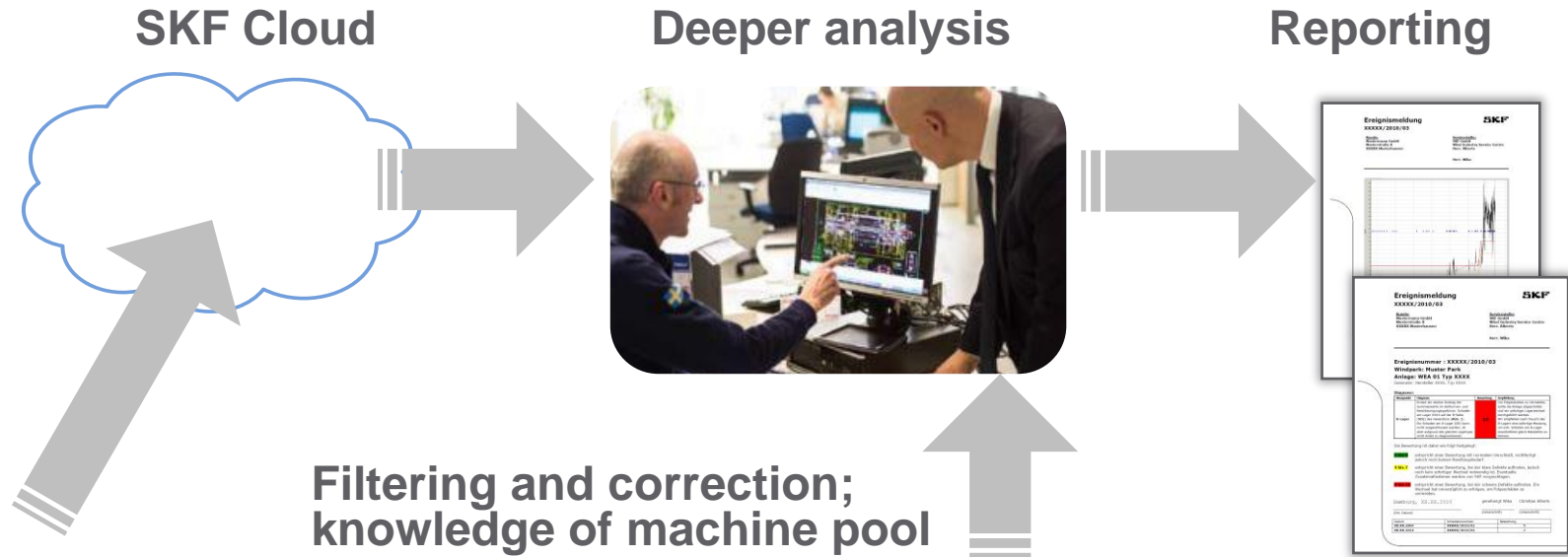
Data collection:

- Approx. 2 MB /day/WTG

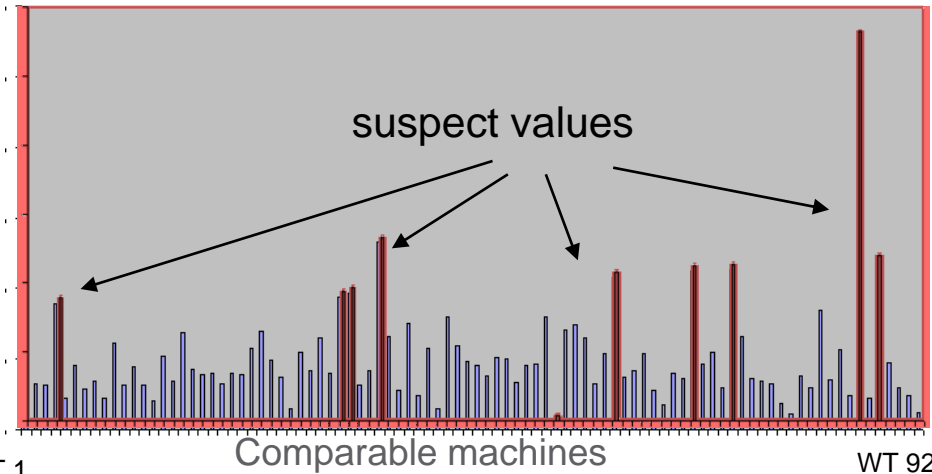


Post processing:

- Data preparation
- Filtering / selecting
- Highlighting



Filtering and correction;
knowledge of machine pool

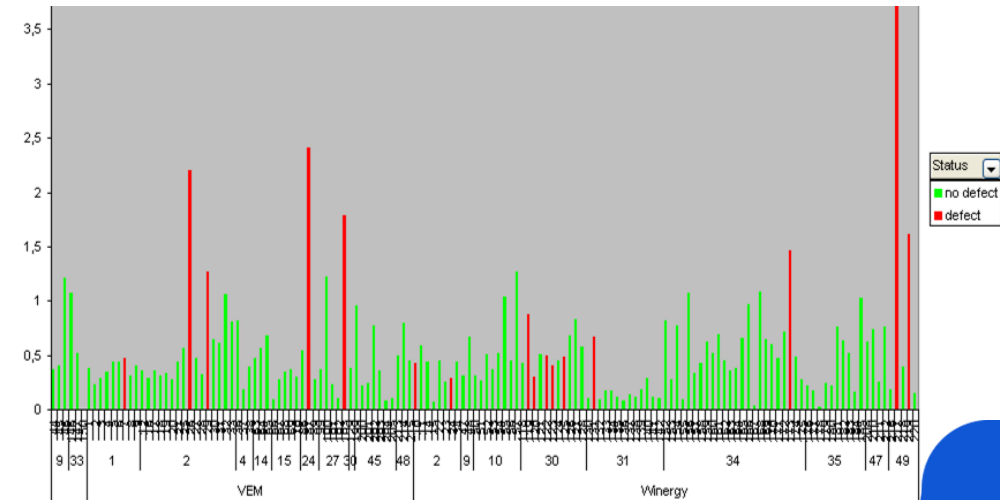


WT 1

Comparable machines

WT 92

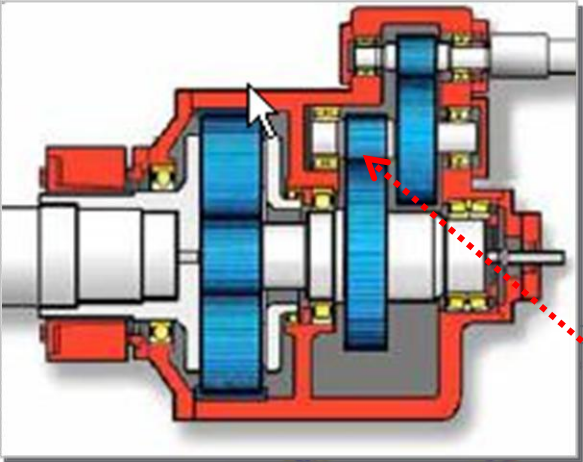
© SKF Group



Status
 no defect
 defect

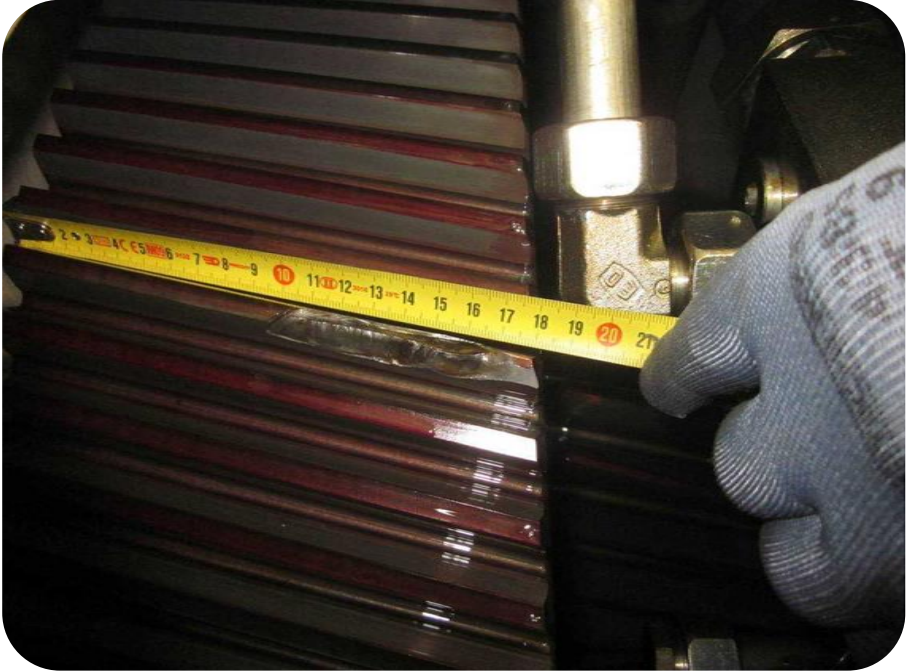
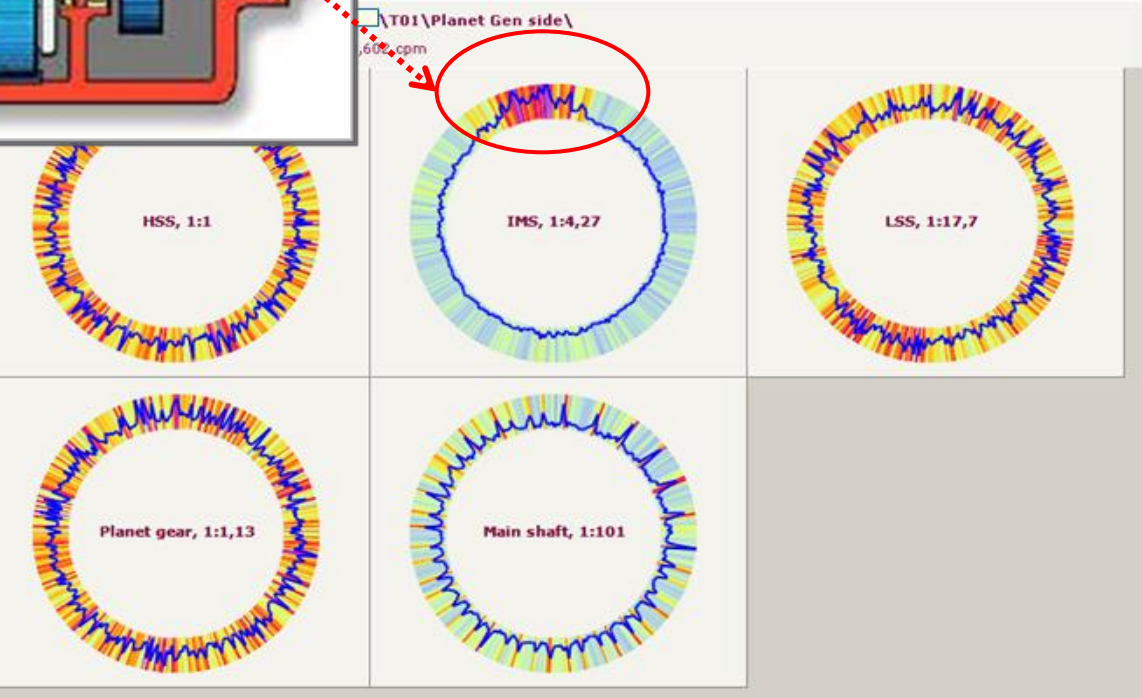


Case example; SKF @ptitude Observer Gear Inspector revealed damaged pinion – enabled timely action



Diagnosis:

Component	Description	Evaluation	Recommendation
IMS Pinion	Observations: Evolution on the overall vibration values and some signals – Clear peaks and harmonics are seen on signal. Symptoms: Harmonics	8	Boroscopy visit needs to be planned to check the condition of the teeth on IMS shaft



Conclusion on CMS / RDS use on Gearbox

- CMS is cost effective
- Even planetary issues can be picked up
- No need of long term data analysis to get efficient findings
- CMS value is obtained with the right indicators, alarm levels, trending and visual tools like SKF @ptitude Observer Gear Inspector



SKF Imx-8



SKF Imx-W

SKF®